

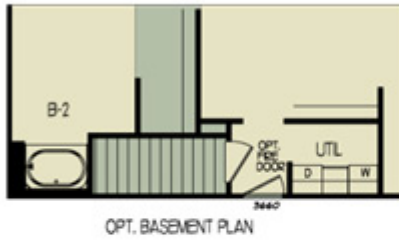
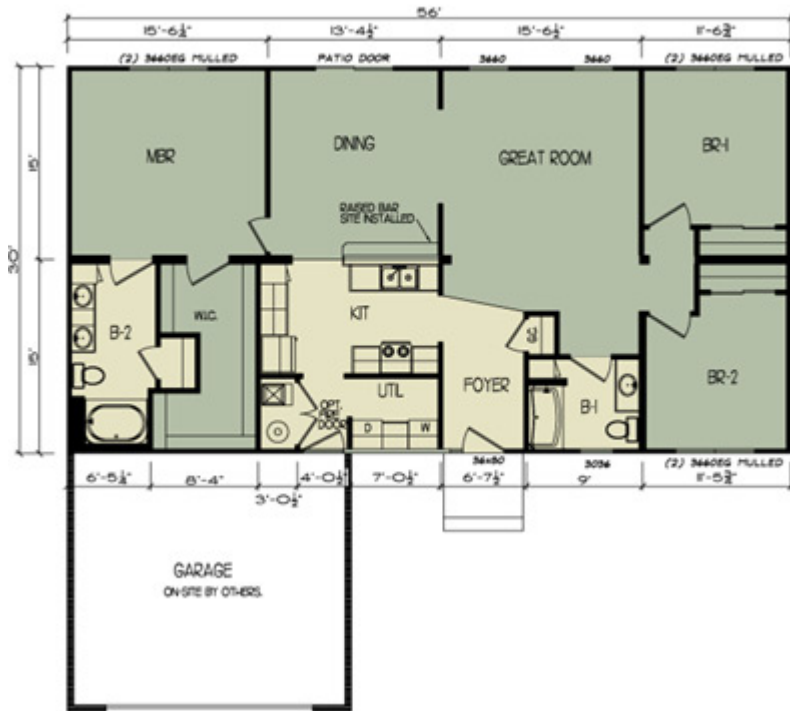
Michigan Modular Home Network



The information presented should be considered reliable but not guaranteed

Copyright © 2000 - 2008, Michigan Modular Home Network Inc., All Rights Reserved
6757 Cascade Road SE Grand Rapids, MI 49546

Michigan Modular Home Network



The information presented should be considered reliable but not guaranteed

Michigan Modular Home Network

Home Only Packages – Do not include the items below

- Permits
- Excavation
- All Concrete work, including foundation, sill plates and drainage work
- Driveway / walkways
- Bring in and hook-up of all utilities
- Electric - ENERGY REQUEST # SHOULD BE OBTAINED IMMEDIATELY
- House comes with a 200 amp service box wired to house, site work includes mounting meter box on house and running service to panel box, wiring lights, receptacles, crossovers, smoke detectors in basement and wiring for three-way switch at basement stairs
- Gas - No gas lines are run in house from the factory - this includes changing of all orifices for the type of fuel and hooking up all gas appliances unless HVAC is purchased through dealer (see HVAC below)
- Phone
- Cable
- Septic - Every waste line has a direct drop to basement to be assembled and run to septic
- Well - Waterlines are run throughout house. Site work includes running line from well & hooking up to existing lines in house - basically, one hot, and one cold hookup. There are flexible copper connections between sections of house. If customer wants solid connection, it is their responsibility.
- Hook up of all septic and water lines to house
- Complete venting thru roof for waste lines, bath vents & range hoods (comes from factory with vents run to attic)
- Completion of ALL unfinished Siding

The information presented should be considered reliable but not guaranteed

Michigan Modular Home Network

- Garage
- Decks - Porches - Stoops
- Stairway to basement
- Hang and finish drywall in stairway to basement
- Jack posts are supplied and fastened by contractor or homeowner to basement floor, set crew is responsible for installing jack posts and lagging to house main beam
- Insulating perimeter joists
- HVAC - Is available through dealer but is not included as part of the purchase price of the home. For pricing contact your home consultant. All dozer work to stage and set house
- House comes dry walled and primed. Homeowner is responsible for finish coat of paint or wall paper. Primer coat may vary in color but will be ready for final finish.
- All trash removal and final clean up - a dumpster on site is requested
- Obtain Certificate of Occupancy
- Dryer vent & hook-up

The information presented should be considered reliable but not guaranteed